



ANNUAL REPORT 2024

HOW YOUR GIVING DIRECTLY IMPACTED

# LEADERSHIP

- In our continued commitment to team building and staff health, staff members engaged in our second All-Staff Retreat.
- Because we value the significance of leadership development, staff members were given opportunities to grow through various conferences and courses.

## LEADERSHIP

Joe Henseler, Lead Pastor, FT

Thomas Brown, Executive Director of Systems, FT

Evie Wellings, Executive Assistant, FT



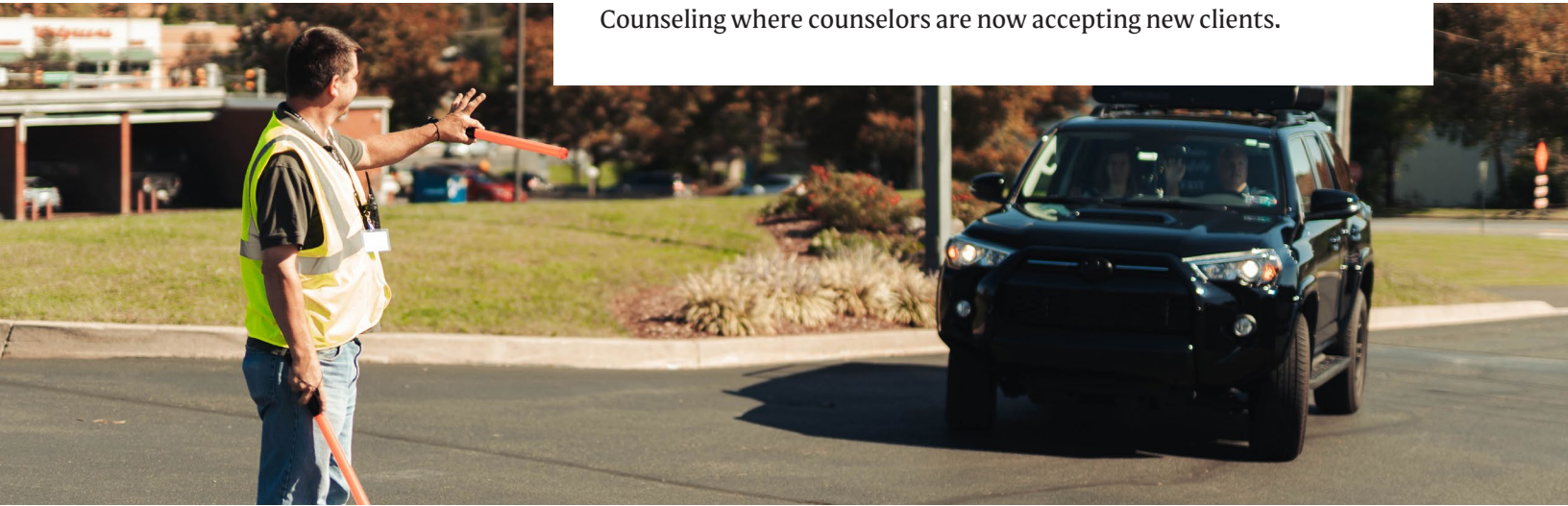
## OPERATIONS

TBD, Director of Operations, FT  
Tom Chrin, Custodian, FT  
Jack DeLong, Housekeeper, PT  
Lauren Jones, Housekeeper, PT  
Michael Shara, Custodian, FT  
Cindy Shoemaker, PT  
Rick Shoemaker, Campus Systems  
Coordinator, FT  
Scott Smith, Custodian, FT  
TBD, Custodian, PT

HOW YOUR GIVING DIRECTLY IMPACTED

# OPERATIONS

- We purchased and installed a new HVAC unit to better control the temperature throughout the year in The Chapel.
- We invested months of oversight to the construction of Anathallo Counseling where counselors are now accepting new clients.



HOW YOUR GIVING DIRECTLY IMPACTED

# FINANCE & I.T.

- We upgraded our entire networking system, including internet and WiFi access, which helped staff, volunteers, and attendees have smoother and more robust digital access to Faith Church both on and off campus.
- We created individual stations for the Online Ministry team by purchasing computers and monitors allowing them to engage with our online attendees each week.

## FINANCE & INFORMATION TECHNOLOGY

Steve Davis, Director of Finance & IT, FT  
Blanca Yaya, Bookkeeper, FT





HOW YOUR GIVING DIRECTLY IMPACTED

# MEDIA TECHNOLOGY

- We upgraded systems in The Chapel to allow for better lighting control and seamless sermon playback creating a smoother, distraction-free service on Sundays.
- We purchased 6 new TV carts equipped with Apple TVs and DVD players for various ministries to use for discipleship groups, care groups, and planning meetings.

## MEDIA TECHNOLOGY

Jake Levesque, Tech & Media Director, FT  
Caleb Cawley, LIVE Video Lead, PT  
Ryan Westerbaan, Lead Stage Manager, PT  
Tyler Zimmerman, LIVE Lighting Lead, PT  
TBD, Tech & Media Coordinator, FT  
TBD, Technology & Media Assistant, PT





HOW YOUR GIVING DIRECTLY IMPACTED

# TEAM DEVELOPMENT

- To encourage continuous staff learning and growth, we hosted the first Lunch & Learn this past winter.
- We made an addition to our staff performance management HRIS platform by adding Goals & Objectives to help strengthen staff performance.

## TEAM DEVELOPMENT

Erica Elcock, Director of Team Development, FT  
TBD, Human Resources Coordinator, PT

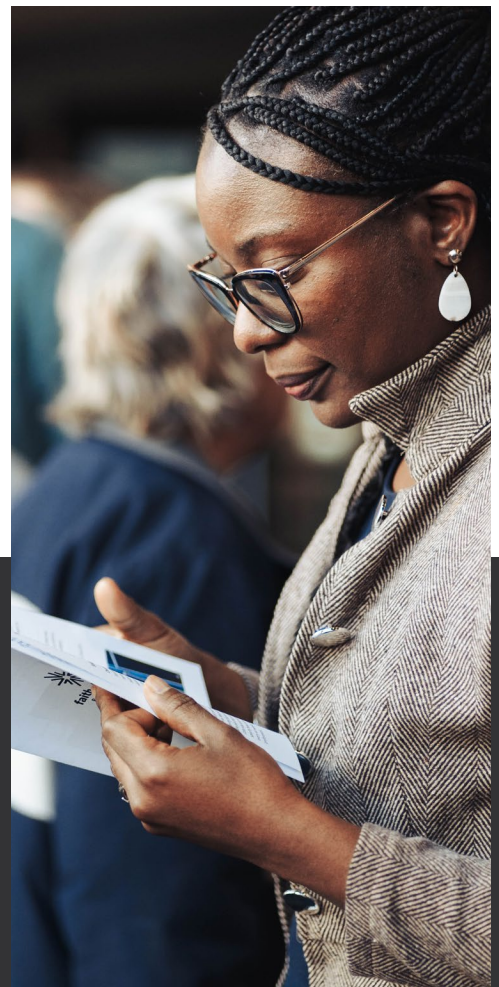
HOW YOUR GIVING DIRECTLY IMPACTED

# ENGAGEMENT

- Using videography, we captured 132 baptism stories of how Jesus changes everything.
- We designed and printed several banners for an interactive Good Friday experience where people reflected on the sacrifice Jesus made on the cross.

## ENGAGEMENT

Michl Whitehead, Director of Engagement, FT  
Ali Klopp, Communications Coordinator, PT  
Sarah Soloman, Communications Coordinator, FT



HOW YOUR GIVING DIRECTLY IMPACTED

# WORSHIP

- We purchased recording equipment that allows us to capture our original songs and bring them to life in our Sunday services.
- We hosted *Summer Worship Night* where our church family gathered to worship God and enjoy surprise sorbet.

## WORSHIP

TBD, Director of Worship, FT

Jenny Castner, LIVE Worship Leader, FT

Tristan Klopp, Music Production Director, FT

Brian Miller, CLASSIC Worship Leader, PT



HOW YOUR GIVING DIRECTLY IMPACTED

# NEXT STEPS

- Last Fall, we hosted *Women's Gathering* which provided spiritual encouragement to over 200 women.
- We purchased curriculum for a new class where 60 grandparents learned how to steward their unique influence to help their grandchildren find and follow Jesus.

## NEXT STEPS

Dave Peters, Director of Next Steps, FT

Paul Meiners, Senior Associate Pastor, PT

Brooke Solberg, Pastor Emeritus, PT

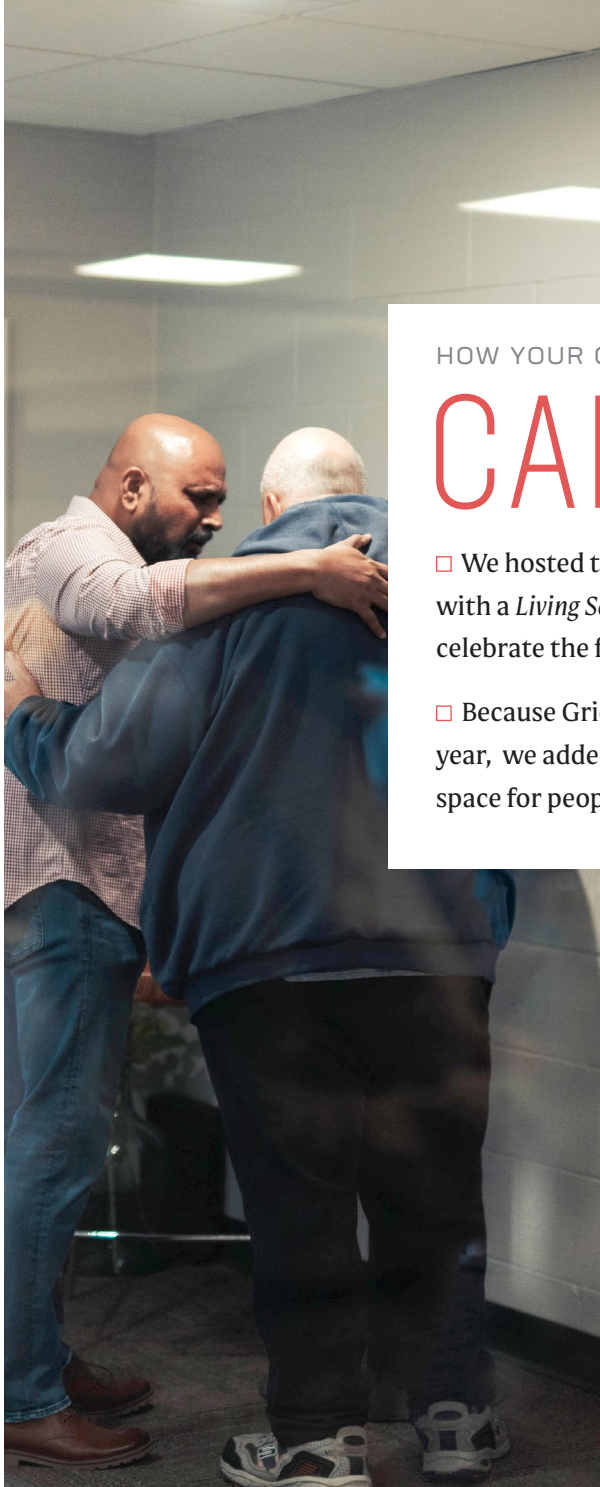
TBD, Next Steps Assistant, PT

## ADULTS

Dave Steel, Discipleship Director, FT

Dan Marzari, Discipleship Coordinator, PT





HOW YOUR GIVING DIRECTLY IMPACTED

# CARE

- We hosted the *12-Year-Anniversary Celebration* for Celebrate Recovery with a *Living Song* concert where over 100 people joined us to celebrate the freedom in Christ they've found through this ministry.
- Because Grief Share attendance has been at maximum capacity all year, we added another group for the summer session creating more space for people to find healing in Jesus.

## CARE

Greg Wollenhaupt, Care Director, FT  
Trudi Coffman, Care Coordinator, PT  
Diane Wolf, Care Assistant, PT



HOW YOUR GIVING DIRECTLY IMPACTED

# FAITH PRESCHOOL

- We added beautiful, engaging signage along Hamilton Boulevard that has helped to increase the number of families enrolled in our classes.
- We hosted both Christmas and end-of-the-year programs that brought 400+ people through our doors where they were given the opportunity to find Jesus and hear about His love for them.



## FAITH PRESCHOOL

Stephanie Fisher, Faith Preschool Director, FT  
Livia Brenner, Faith Preschool Teacher, PT  
Katherine Carman, Faith Preschool Assistant Teacher, PT  
Lori Crippen, Faith Preschool Assistant Teacher, PT  
Jill Gengaro, Faith Preschool Teacher, PT  
Robin Hagy, Faith Preschool Teacher, PT  
Erica Heffentrager, Faith Preschool Assistant Teacher, PT  
Michelle Ingalls, Faith Preschool Teacher, PT  
Mary Kay Krause, Faith Preschool Assistant Teacher, PT  
Bonny Landes, Faith Preschool Assistant Teacher, PT  
Ana Llerena, Faith Preschool Assistant Teacher, PT  
Grace Ludwig, Faith Preschool Receptionist, PT  
Cynthia Nielsen, Faith Preschool Assistant Teacher, PT  
Ana Solorzano, Faith Preschool Assistant Teacher, PT  
Jessica Zabler, Faith Preschool Teacher, PT  
TBD, Faith Preschool Teacher, PT  
TBD, Faith Preschool Assistant Teacher, PT

---

HOW YOUR GIVING DIRECTLY IMPACTED

## FAITH KIDS

- For the first time since Covid, we hosted a 5-day VBX program where 450 kids (180 volunteers) had the opportunity to find and follow Jesus through a week of fun games, crafts, and worship.
- We provided 40 personalized gift baskets to welcome new babies along with a personal visit and prayer time with the family.

### FAITH KIDS

Patti Schoonover, Faith Kids Director, FT  
Duana Helsel, Faith Kids Coordinator - Downtown, PT  
Carol Miller, Faith Kids Coordinator - Uptown, PT

### FAITH STUDENTS

Pam Zimmerman, Faith Students Director, FT  
Laurie Hauck, Faith Students Assistant, PT  
TBD, Faith Students Assistant Director, FT



---

HOW YOUR GIVING  
DIRECTLY IMPACTED

## FAITH STUDENTS

- We launched Sunday Lunches, a new opportunity for our students to connect and be discipled in Faith High School.
- We covered the cost of our leaders to attend the summer, fall, and winter retreats, so they could continue building relationships with their groups while shepherding the students.



HOW YOUR GIVING DIRECTLY IMPACTED

# GUEST EXPERIENCE

- We purchased two new iPads to help guests get better connected by joining a Small Group, Care Group, or Serving Team.
- We also purchased two new coffee pots to help accommodate the growing numbers of guests we have the pleasure of serving each and every Sunday.



## GUEST EXPERIENCE

Margaret Reighn, Guest Experience Coordinator, FT  
Jane Jones, Receptionist, PT  
Dolly Magness, Receptionist, PT  
TBD, Guest Experience Assistant, PT

## OUTREACH

Christine Soloman, Outreach Coordinator, PT  
18 Global Ministry Partners  
3 Local Ministry Partners

HOW YOUR GIVING DIRECTLY IMPACTED

# OUTREACH

- We helped to purchase a car for our ministry partners in the Arabian Peninsula.
- We purchased parking lot space for our partner church Iglesia de Fe in Allentown allowing them to expand their capacity for congregation members and community outreach.



HOW YOUR GIVING DIRECTLY IMPACTED

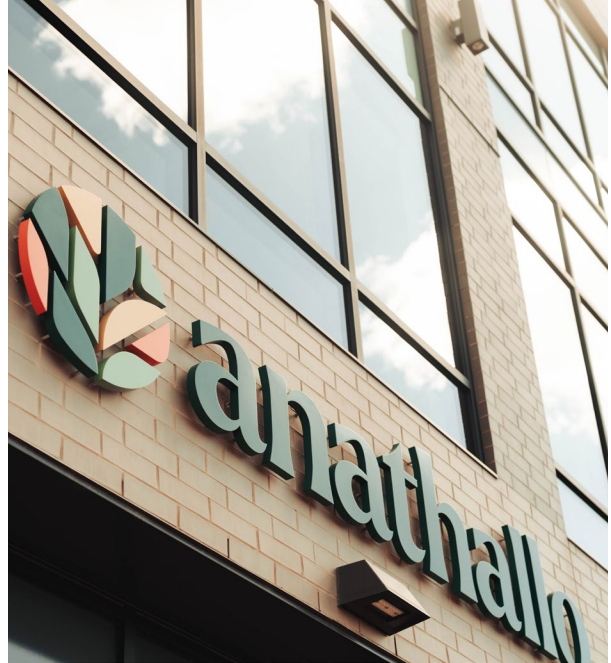
## COUNSELING

- Over the last year, we began and completed construction of Anathallo Counseling.
- We furnished and decorated each of the office spaces and common spaces.

HOW YOUR GIVING DIRECTLY IMPACTED

## FOSTER & ADOPTION

- We purchased training for an adoptive mother to begin facilitating a course for women to find healing from grief and pain.
- We started providing free music lessons to foster/adoptive children which has given them a new sense of joy and confidence.



### COUNSELING

Chris Zang, Executive Director of Anathallo, FT  
Mary Marino, Office Coordinator, PT

### FOSTER & ADOPTION

Robyn Hubbard, Foster & Adoption Director, FT

### ONLINE

Tim Azevedo, Online Director, FT

### MINISTRY SOURCING & COMMUNITY IMPACT

Rachel Ruba, Director of Ministry Sourcing  
& Community Impact, FT



HOW YOUR GIVING DIRECTLY IMPACTED

## ONLINE

- We purchased equipment to build an office video studio which allows us to minister to people online through prayer videos, video calls, video content creation, and live streaming.
- To show our appreciation for our Online Ministry team, we hosted a Christmas party complete with delicious food, fun games, and incredible prizes.